

**Class-X**  
**Science-086**  
**SAMPLE QUESTION PAPER 2019-20**

**TIME: 3 Hrs.**

**M.M.: 80**

**General Instructions:**

1. The question paper comprises three sections – A, B and C. Attempt all the sections.
2. All questions are compulsory.
3. Internal choice is given in each section.
4. All questions in Section A are one-mark questions comprising MCQ, VSA type and assertion-reason type questions. They are to be answered in one word or in one sentence.
5. All questions in Section B are three-mark, short-answer type questions. These are to be answered in about 50 - 60 words each.
6. All questions in Section C are five-mark, long-answer type questions. These are to be answered in about 80 – 90 words each.
7. This question paper consists of a total of 30 questions.

**SECTION A**

- |   |  |   |
|---|--|---|
| 1 | Define catenation.   | 1 |
| 2 | How does valency of an element vary across a period?   | 1 |
| 3 | <b>Answer question numbers 3(a) - 3(d) on the basis of your understanding of the following paragraph and the related studied concepts.</b> |   |

Renewable energy sources such as wind energy are vital for the Indian economy, not only from the point of view of supply, but also from the perspective of environmental and social benefits. India is the world's fifth largest wind-power producer and the largest windmill facilities in India are installed in Tamil Nadu. Muppandal is a small village of Tamil Nadu and one of the most important sites of wind-farm in the state. It uses wind from the Arabian Sea to produce renewable energy. The suitability of Muppandal as a site for wind farms stems from its geographical location as it has access to the seasonal monsoon winds.

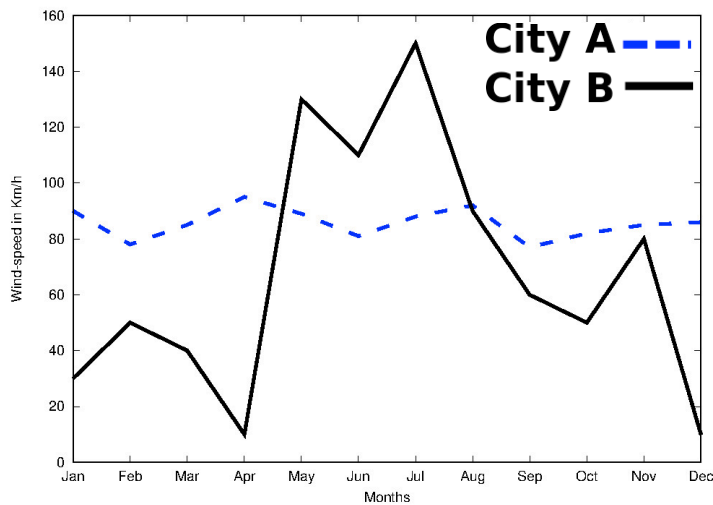


The electrical generators used on wind turbines in sites like Muppandal, produce an output AC of 240 V and a frequency of 50 Hz even when the wind speed is fluctuating. A

## Central Board of Secondary Education

transformer may be required to increase or decrease the voltage so it is compatible with the end usage, distribution or transmission voltage, depending on the type of interconnection.

- 3(a) State the principle behind electric generator. 1
- 3(b) The output frequency of wind turbine is 50 Hz. What is meant by this statement? 1
- 3(c) Why do you think Muppandal is at an advantageous position for this project? 1
- 3(d) Based on the data represented in the graph below, which of the two cities A or B would be an ideal location for establishing a wind-farm and why? 1



- 4 **Question numbers 4(a) - 4(d) are based on the two tables given below. Study these tables related to blood sugar levels and answer the questions that follow.**

*Table A (Blood glucose chart)*

|                        | Mean Blood Glucose Level (mg/dL) |
|------------------------|----------------------------------|
| Doctor's advice needed | 380                              |
|                        | 350                              |
|                        | 315                              |
|                        | 280                              |
|                        | 250                              |
|                        | 215                              |
| Good                   | 180                              |
|                        | 150                              |
| Excellent              | 115                              |
|                        | 80                               |
|                        | 50                               |

Central Board of Secondary Education

*Table B (Blood Report of Patient X and Y)*

| Time of check                  | Blood Glucose ranges (mg/dL) |           |
|--------------------------------|------------------------------|-----------|
|                                | Patient X                    | Patient Y |
| Before breakfast (Fasting)     | < 100                        | 70 – 130  |
| Before lunch, supper and snack | < 110                        | 70 – 130  |
| Two hours after meals          | < 140                        | < 180     |
| Bedtime                        | < 120                        | 90- 15    |

- 4(a) Refer to Table B showing the blood report of the levels of glucose of patients X and Y. Infer the disease which can be diagnosed from the given data. 1
- 4(b) Identify the hormone whose level in the blood is responsible for the above disease. 1
- 4(c) Which one of the following diets would you recommended to the affected patient? 1
- i) High sugar and low fat diet.
  - ii) Low sugar and high protein diet.
  - iii) High Fat and low fiber diet.
  - iv) Low sugar and high fiber diet.
- 4(d) Refer to the Table A and suggest the value of the mean blood glucose level beyond which doctor's advice is necessary: 1
- i) 180 mg/dL
  - ii) 115 mg/dL
  - iii) 50 mg/dL
  - iv) 80 mg/dL
- 5 When we enter a dark room coming from outside, immediately the things inside the room do not appear clear to our eyes. This is because 1
- i) pupils do not open at all in the dark.
  - ii) pupils take time to adjust.
  - iii) light travels slower in a dark room.
  - iv) pupils open very quickly in the dark.

**OR**

The phenomena of light responsible for the working of the human eye is

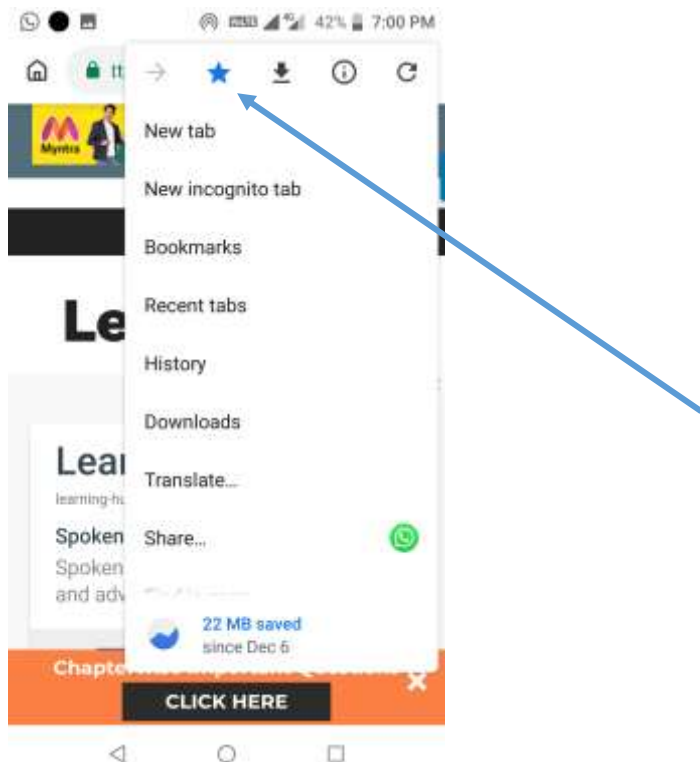
- i) reflection
- ii) refraction
- iii) power of accommodation
- iv) persistence of vision

# CBSE Sample Papers for Class 10

| CBSE Sample Papers for Class 10  |   |
|--|---|
| <a href="#">CBSE Sample Paper For Class 10 Maths</a>                             | <a href="#">CBSE Sample Papers For Class 10 Science</a>         |
| <a href="#">CBSE Sample Paper For Class 10 Social Science</a>                    | <a href="#">CBSE Sample Paper for Class 10 English</a>          |
| <a href="#">CBSE Sample Paper for Class 10 English Communicative</a>             | <a href="#">CBSE Sample Paper for Class 10 Hindi</a>            |
| <a href="#">CBSE Sample Paper For Class 10 Sanskrit</a>                          | <a href="#">CBSE Sample Paper for Class 10 Computer Science</a> |
| <a href="#">CBSE Previous Year Papers for Class 10 All Subjects PDF Download</a> |   |

## Bookmark – LearnCBSE.in

1. On your Android phone or tablet, open the Chrome app.
2. Go to **LearnCBSE.in**.
3. To the right of the address bar, tap More > Star ★.



## Open a bookmark

1. On your Android phone or tablet, open the Chrome app.
2. At the top right, tap More > Bookmarks.
3. Click on your favorite LearnCBSE.in URL.

## How to Search in Google, to get good results (NCERT Solutions)

- In Google Assistant **Voice Search LearnCBSE.in** to Get Best NCERT Solutions
- **Add to Favorites** in Google browser to Access Faster
- **In Google Search bar You can search**  
**Ex: (i)** LearnCBSE.in Class 10 Maths ch 1 Ex 1.1 Q1,  
**(ii)** LearnCBSE.in Class 10 Science Important Questions,  
**(iii)** LearnCBSE.in what steps can be taken to control soil erosion in the hilly areas? [Any Question (LearnCBSE.in + Type your Question in Google Search bar)]

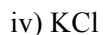
## Central Board of Secondary Education

- 6 When a 4V battery is connected across an unknown resistor there is a current of 100 mA in the circuit. The value of the resistance of the resistor is:
- i)  $4 \Omega$
  - ii)  $40 \Omega$
  - iii)  $400 \Omega$
  - iv)  $0.4 \Omega$
- 7 Unit of electric power may also be expressed as: 1
- i) volt-ampere
  - ii) kilowatt-hour
  - iii) watt-second
  - iv) joule-second
- 8 It was found that water from a river was contaminated with Coliform bacteria. Which one of the following pollutant might have got mixed with the water? 1
- i) Fertilizer run off
  - ii) Industrial waste
  - iii) Pesticides
  - iv) Human faecal matter

**OR**

- Which one of the following stakeholders of forests causes the maximum damage to forest?
- i) People who live in or around the forest
  - ii) The forest department of the government
  - iii) The wildlife and native enthusiasts
  - iv) The industrialists
- 9 Which one of the following green house gases is a contributor due to incomplete combustion of coal and petroleum? 1
- i) Oxides of nitrogen
  - ii) Methane
  - iii) Carbon monoxide
  - iv) Carbon dioxide
- 10 Which of the following reactions is an endothermic reaction? 1
- i) Burning of coal.
  - ii) Decomposition of vegetable matter into compost.
  - iii) Process of respiration.
  - iv) Decomposition of calcium carbonate to form quick lime and carbon dioxide.
- 11 Identify the basic salt from the following salts: 1
- i)  $\text{Na}_2\text{CO}_3$

## Central Board of Secondary Education



- 12 The positions of four elements A, B, C and D in the modern periodic table are shown below. Which element is most likely to form an acidic oxide? 1

|   |   |  |  |  |  |  |  |  |  |  |  |  |  |  |  |  |  |   |   |
|---|---|--|--|--|--|--|--|--|--|--|--|--|--|--|--|--|--|---|---|
|   |   |  |  |  |  |  |  |  |  |  |  |  |  |  |  |  |  |   |   |
| A |   |  |  |  |  |  |  |  |  |  |  |  |  |  |  |  |  |   |   |
|   | B |  |  |  |  |  |  |  |  |  |  |  |  |  |  |  |  |   |   |
|   |   |  |  |  |  |  |  |  |  |  |  |  |  |  |  |  |  | C |   |
|   |   |  |  |  |  |  |  |  |  |  |  |  |  |  |  |  |  |   | D |
|   |   |  |  |  |  |  |  |  |  |  |  |  |  |  |  |  |  |   |   |
|   |   |  |  |  |  |  |  |  |  |  |  |  |  |  |  |  |  |   |   |

- i) A  
 ii) B  
 iii) C  
 iv) D

**OR**

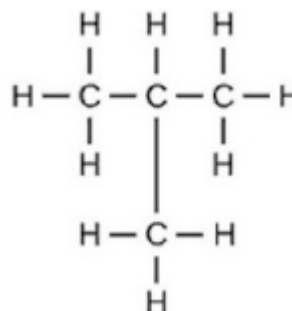
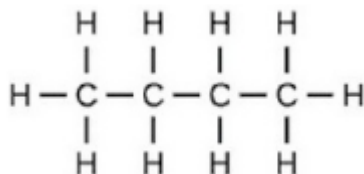
Elements P, Q, R and S have atomic numbers 11, 15, 17 and 18 respectively. Which of them are reactive non-metals?

- i) P and Q  
 ii) P and R  
 iii) Q and R  
 iv) R and S

**For question numbers 13 and 14, two statements are given- one labeled *Assertion* (A) and the other labeled *Reason* (R). Select the correct answer to these questions from the codes (i), (ii), (iii) and (iv) as given below**

- i) Both A and R are true and R is correct explanation of the assertion.  
 ii) Both A and R are true but R is not the correct explanation of the assertion.  
 iii) A is true but R is false.  
 iv) A is false but R is true.

- 13 **Assertion:** Following are the structural isomers of butane. 1



**Reason:** Structural isomers have the same molecular formula but they differ in their structures.

- 14 **Assertion:** A fuse wire is always connected in parallel with the mainline. 1

**Reason:** If a current larger than the specified value flows through the circuit, fuse wire melts.

### SECTION B

- 15 (i) Write two observations when lead nitrate is heated in a test tube. 3  
(ii) Name the type of reaction.  
(iii) Write a balanced chemical equation to represent the above reaction.
- 16 A compound 'X' of sodium is used as an antacid and it decomposes on strong heating. 3  
(i) Name the compound 'X' and give its chemical formula.  
(ii) Write a balanced chemical equation to represent the decomposition of 'X'.  
(iii) Give one use of compound 'X' besides an antacid.

**OR**

You are provided with 90 mL of distilled water and 10 mL of concentrated sulphuric acid to prepare dilute sulphuric acid.

- (i) What is the correct way of preparing dilute sulphuric acid? Give reason.  
(ii) How will the concentration of  $\text{H}_3\text{O}^+$  ions change on dilution?
- 17 Two elements X and Y have atomic numbers 12 and 16 respectively. To which period of the modern periodic table do these two elements belong? What type of bond will be formed between them and why? Also give the chemical formula of the compound formed. 3
- 18 (i) Create a terrestrial food chain depicting four trophic levels. 3  
(ii) Why do we not find food chains of more than four trophic levels in nature?

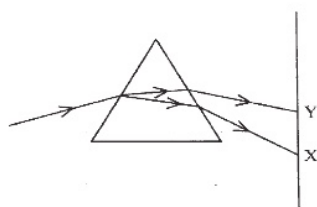
**OR**

How will you create an artificial aquatic ecosystem, which is self-sustainable?



## Central Board of Secondary Education

- 19 Explain the processes of aerobic respiration in mitochondria of a cell and anaerobic respiration in yeast and muscle with the help of word equations. 3
- 20 In a pea plant, the trait of flowers bearing purple colour (PP) is dominant over white colour (pp). Explain the inheritance pattern of F1 and F2 generations with the help of a cross following the rules of inheritance of traits. State the visible characters of F1 and F2 progenies. 3
- 21 Explain giving reasons the bending of the shoot tip of a plant towards light source coming from one side of the plant. 3
- 22 It is desired to obtain an erect image of an object, using concave mirror of focal length of 12 cm. 3
- (i) What should be the range of the object distance in the above case?
- (ii) Will the image be smaller or larger than the object? Draw a ray diagram to show the formation of image in this case.
- (iii) Where will the image of this object be, if it is placed 24 cm in front of the mirror?
- 23 Suppose your parents have constructed a two room house and you want that in the living room there should be a provision of one electric bulb, one electric fan, a refrigerator and a plug point for appliances of power up to 2 kilowatt. Draw a circuit diagram showing electric fuse and earthing as safety devices. 3
- 24 In the figure given below, a narrow beam of white light is shown to pass through a triangular glass prism. After passing through the prism, it produces a spectrum XY on the screen. 3



- (i) Name the phenomenon.
- (ii) State the colours seen at X and Y.
- (iii) Why do different colours of white light bend at different angles through a prism?

**OR**

- (i) What is visible spectrum?
- (ii) Why is red used as the stopping light at traffic signals?
- (iii) Two triangular glass prisms are kept together connected through their rectangular side. A light beam is passed through one side of the combination. Will there be any dispersion? Justify your answer.

## SECTION C

- 25 Metal X is found in nature as its sulphide XS. It is used in the galvanisation of iron articles. Identify the metal X. How will you convert this sulphide ore into the metal? Explain with equations. 5

## Central Board of Secondary Education

OR

State the reason for the following:

- (i) Aluminium oxide is called an amphoteric oxide.
- (ii) An iron strip dipped in a blue copper sulphate solution turns the blue solution pale green.
- (iii) Hydrogen gas is not evolved when most metals react with nitric acid.
- (iv) Calcium does not occur in free state in nature.
- (v) Sodium or potassium metals are kept immersed under kerosene.

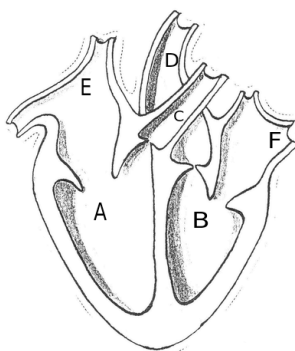
26 The formulae of four organic compounds are given below:

| A        | B          | C          | D        |
|----------|------------|------------|----------|
| $C_2H_4$ | $CH_3COOH$ | $C_2H_5OH$ | $C_2H_6$ |

5

- (i) Which one of these compounds A, B, C or D is a saturated hydrocarbon?
- (ii) Identify the organic acid and give its structural formula.
- (iii) Which of the above compounds when heated at 443K in the presence of concentrated  $H_2SO_4$  forms ethene as the major product? What is the role played by concentrated  $H_2SO_4$  in this reaction? Also write the chemical equation involved.
- (iv) Give a chemical equation when B and C react with each other in presence of concentrated  $H_2SO_4$ . Name the major product formed and mention one of its important use.

27



5

- (i) Identify any two parts from the above diagram which carry oxygenated and deoxygenated blood.
- (ii) Explain the process of double circulation with the help of a flow chart.

28

- (i) Describe the various steps involved in the process of binary fission with the help of a diagram.
- (ii) Why do multicellular organisms use complex way of reproduction?

5

Central Board of Secondary Education

OR

(i) Describe the role of prostate gland, seminal vesicle and testes in the human male reproductive system.

(ii) How is the surgical removal of unwanted pregnancies misused?

(iii) Explain the role of oral contraceptive pills in preventing conception.

29 (i) Consider a conductor of resistance 'R', length 'L', thickness 'd' and resistivity 'ρ'. 5  
Now this conductor is cut into four equal parts. What will be the new resistivity of each of these parts? Why?

(ii) Find the resistance if all of these parts are connected in:

(a) Parallel

(b) Series

(iii) Out of the combinations of resistors mentioned above in the previous part, for a given voltage which combination will consume more power and why?

30 (i) A lens produces a magnification of -0.5. Is this a converging or diverging lens? If 5  
the focal length of the lens is 6 cm, draw a ray diagram showing the image formation in this case.

(ii) A girl was playing with a thin beam of light from a laser torch by directing it from different directions on a convex lens held vertically. She was surprised to see that in a particular direction, the beam of light continues to move along the same direction after passing through the lens. State the reason for her observation. Draw a ray diagram to support your answer.

OR

(i) On entering in a medium from air, the speed of light becomes half of its value in air. Find the refractive index of that medium with respect to air?

(ii) A glass slab made of a material of refractive index  $n_1$  is kept in a medium of refractive index  $n_2$ .

A light ray is incident on the slab. Draw the path of the rays of light emerging from the glass slab, if (i)  $n_1 > n_2$  (ii)  $n_1 = n_2$  (iii)  $n_1 < n_2$

\*\*\*\*\*

Central Board of Secondary Education



LearnCBSE.in Class 10 Science

## NCERT Solutions for Class 10 Science

All These NCERT Solutions for Class 10 Science (Physics, Chemistry, and Biology) have been solved keeping in mind the guidelines issued by the CBSE. This has also been done in accordance with the marking scheme usually followed by the Board.

## NCERT Solutions for Class 10 Science

### [NCERT Solutions for Class 10 Chemistry](#)

- [Chapter 1 Chemical Reactions and Equations](#)
- [Chemical Reactions and Equations Class 10 Extra Questions](#)
- [Chapter 2 Acids Bases and Salts](#)
- [Acids Bases and Salts Class 10 Extra Questions](#)
- [Chapter 3 Metals and Non-metals](#)
- [Metals and Non-metals Class 10 Extra Questions](#)
- [Chapter 4 Carbon and its Compounds](#)
- [Carbon and its Compounds Class 10 Extra Questions](#)
- [Chapter 5 Periodic Classification of Elements](#)
- [Periodic Classification of Element Class 10 NCERT Extra Questions](#)

### [NCERT Solutions for Class 10 Physics](#)

- [Chapter 10 Light Reflection and Refraction](#)
- [Chapter 11 Human Eye and Colourful World](#)
- [Human Eye and Colourful World Class 10 NCERT Extra Questions](#)
- [Chapter 12 Electricity NCERT Solutions Study Online](#)
- [Chapter 13 Magnetic Effects of Electric Current Study Online](#)
- [Magnetic Effects of Electric Current Class 10 NCERT Extra Questions](#)
- [Chapter 14 Sources of Energy NCERT Solutions Study Online](#)
- [Sources of Energy CBSE Class 10 Physics Extra Questions](#)

## [NCERT Solutions for Class 10 Biology](#)

- [Chapter 6 Life Processes NCERT Solutions Study Online](#)
- [Life Processes CBSE Class 10 Biology Extra Questions](#)
- [Chapter 7 Control and Coordination NCERT Solutions Online](#)
- [Control and Coordination CBSE Class 10 Extra Questions](#)
- [Chapter 8 How do Organisms Reproduce](#)
- [How do Organisms Reproduce CBSE Class 10 Extra Questions](#)
- [Chapter 9 Heredity and Evolution](#)
- [Heredity and Evolution CBSE Class 10 Biology Extra Questions](#)
- [Chapter 15 Our Environment](#)
- [Our Environment CBSE Class 10 Biology Extra Questions](#)
- [Chapter 16 Management of Natural Resources Study Online](#)

## Lakhmir Singh Physics Class 10 Solutions

You will find solutions for Lakhmir Singh and Manjit Kaur class 10 Physics:

- [Lakhmir Singh Physics Class 10 Chapter 1 Electricity](#)
- [Lakhmir Singh Physics Class 10 Chapter 2 Magnetic Effects of Electric Current](#)
- [Lakhmir Singh Physics Class 10 Chapter 3 Sources of Energy](#)
- [Lakhmir Singh Physics Class 10 Chapter 4 Reflection of Light](#)
- [Lakhmir Singh Physics Class 10 Chapter 5 Refraction of Light](#)
- [Lakhmir Singh Physics Class 10 Chapter 6 The Human Eyes And The Colorful World](#)

## Lakhmir Singh Chemistry Class 10 Solutions

- [Chapter 1 – Chemical Reactions and Equations](#)
- [Chapter 2 – Acids, Bases and Salts](#)
- [Chapter 3 – Metals and Non-metals](#)
- [Chapter 4 – Carbon And Its Compounds](#)
- [Chapter 5 – Periodic Classification Of Elements](#)

## Lakhmir Singh Biology Class 10 Solutions

- [Chapter 1 – Life Processes](#)
- [Chapter 2 – Control and Coordination](#)
- [Chapter 3 – How do Organisms Reproduce?](#)
- [Chapter 4 – Heredity and Evolution](#)
- [Chapter 5 – Our Environment](#)
- [Chapter 6 – Management Of Natural Resources](#)

## Important Questions for Class 10 Science – List of Chapters

- [Chapter 1 Chemical Reactions and Equations](#)
- [Chapter 2 Acids Bases and Salts](#)
- [Chapter 3 Metals and Non-metals](#)

- [Chapter 4 Carbon and its Compounds](#)
- [Chapter 5 Periodic Classification of Elements](#)
- [Chapter 6 Life Processes](#)
- [Chapter 7 Control and Coordination](#)
- [Chapter 8 How do Organisms Reproduce](#)
- [Chapter 9 Heredity and Evolution](#)
- [Chapter 10 Light Reflection and Refraction](#)
- [Chapter 11 Human Eye and Colourful World](#)
- [Chapter 12 Electricity](#)
- [Chapter 13 Magnetic Effects of Electric Current](#)
- [Chapter 14 Sources of Energy](#)
- [Chapter 15 Our Environment](#)
- [Chapter 16 Management of Natural Resources](#)

## NCERT Exemplar Problems Solutions for Class 10 Science

- [Chapter 1 Chemical Reactions and Equations](#)
- [Chapter 2 Acids Bases and Salts](#)
- [Chapter 3 Metals and Non-metals](#)
- [Chapter 4 Carbon and its Compounds](#)
- [Chapter 5 Periodic Classification of Elements](#)
- [Chapter 6 Life Processes](#)
- [Chapter 7 Control and Coordination](#)
- [Chapter 8 How do Organisms Reproduce](#)
- [Chapter 9 Heredity and Evolution](#)
- [Chapter 10 Light Reflection and Refraction](#)
- [Chapter 11 Human Eye and Colourful World](#)
- [Chapter 12 Electricity](#)
- [Chapter 13 Magnetic Effects of Electric Current](#)
- [Chapter 14 Sources of Energy](#)
- [Chapter 15 Our Environment](#)
- [Chapter 16 Management of Natural Resources](#)

## CBSE Notes for Class 10 Science

- [Carbon and its Compounds](#)
- [Periodic Classification of Elements](#)
- [How do Organisms Reproduce](#)
- [Heredity and Evolution](#)
- [Light Reflection and Refraction](#)
- [Human Eye and Colorful World](#)
- [Our Environment](#)
- [Management of Natural Resources](#)

All These Questions have been solved keeping in mind the guidelines issued by the CBSE. This has also been done in accordance with the marking scheme usually followed by the Board.

It is an established fact that the impact of NCERT Textbooks on the classroom practices is tremendous. Preparation for Board examinations is incomplete without reading these books and doing the exercises given in them.

Taking this into consideration, these NCERT solutions for Class 10 Science (<https://www.learncbse.in/ncert-solutions-class-10-science/>) has been designed to be an indispensable tool for the students. Care has been taken that the answers to the questions are written in a proper form and as per the marking scheme suggested by the CBSE.

With the aim of imbibing skills and hard work among the students, the solutions has been designed. It covers the Chapter wise solutions of NCERT Textbook questions and contains Chapter wise solutions of CBSE (CCE) examination questions. Utmost care has been taken to cover all the previous year's questions.

Constructive and thoughtful suggestions for further improvement are welcome.

### **More Resources for CBSE Class 10**

- [NCERT Solutions Home Page](#)
- [NCERT Solutions for Class 10 Science](#)
- [NCERT Solutions for Class 10 Maths](#)
- [NCERT Solutions for Class 10 Social](#)
- [NCERT Solutions for Class 10 English](#)
- [NCERT Solutions for Class 10 Hindi](#)
- [NCERT Solutions for Class 10 Sanskrit](#)
- [NCERT Solutions for Class 10 Foundation of IT](#)
- [RD Sharma Class 10 Solutions](#)